

Trauma and Injury Intelligence Group Biannual Bulletin

Tameside General Hospital Emergency Department
April 2014 to March 2015

July 2015



Centre for Public Health,
Faculty of Education, Health and Community,
Liverpool John Moores University,
Henry Cotton Campus,
15-21 Webster Street,
Liverpool, L3 2ET

cph.org.uk

0151 231 4500

tiig@ljmu.ac.uk

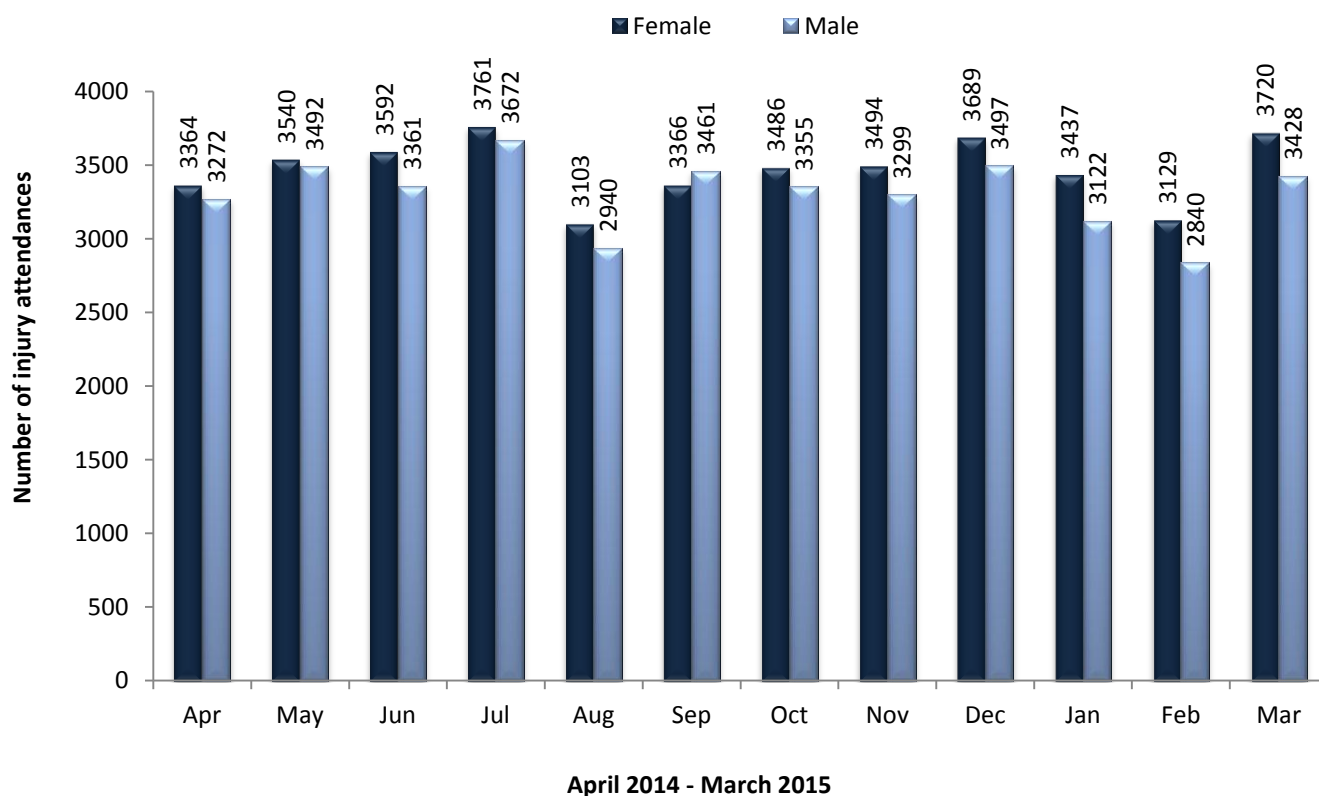
tiig.info

twitter.com/tiig_cph

ALL INJURY ATTENDANCES

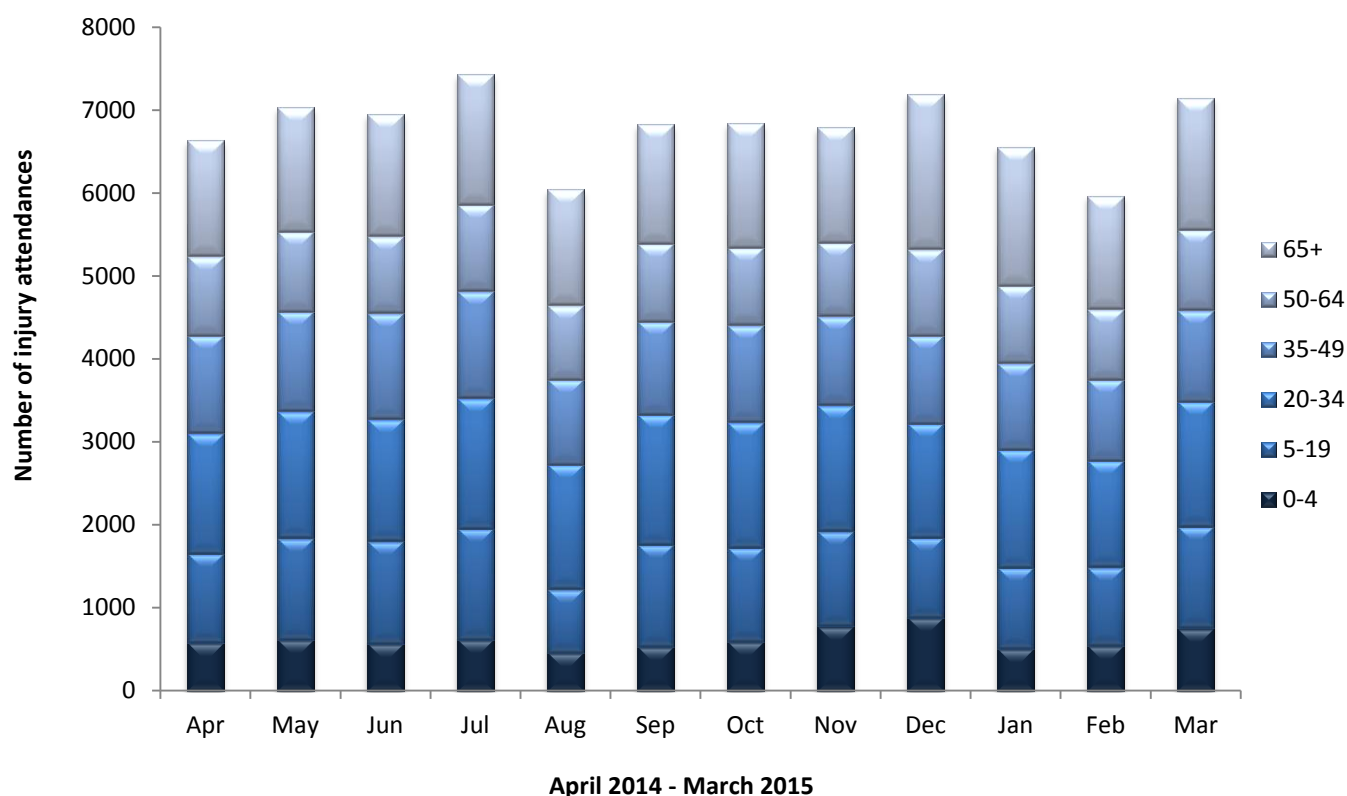
This bulletin provides a breakdown of all injury attendances to Tameside General Hospital Emergency Department (ED) between April 2014 and March 2015. During this twelve month period there were 81,420 injury attendances to the ED. The month with the highest number of attendances, calculated as a daily average, was July 2014 (240 per day), while August 2014 had the fewest attendances (195 per day; figure 1).

Figure 1: ED injury attendances by gender and month, April 2014 to March 2015



Females accounted for over half (51%) of all injury attendances (figure 1) and the highest proportions of attendances were for those aged between 20 and 34 years, and aged 65 years or over (22% each; figure 2).

Figure 2: ED injury attendances by age group and month, April 2014 to March 2015[§]



[§] There were seven records where the age was unknown; these have been omitted from the chart.

The highest proportion of attendances (86%) were categorised as ‘other’ injuries. Falls accounted for 7% of injury attendances while sports injuries and road traffic collisions (RTCs) each accounted for 2% (table 1).

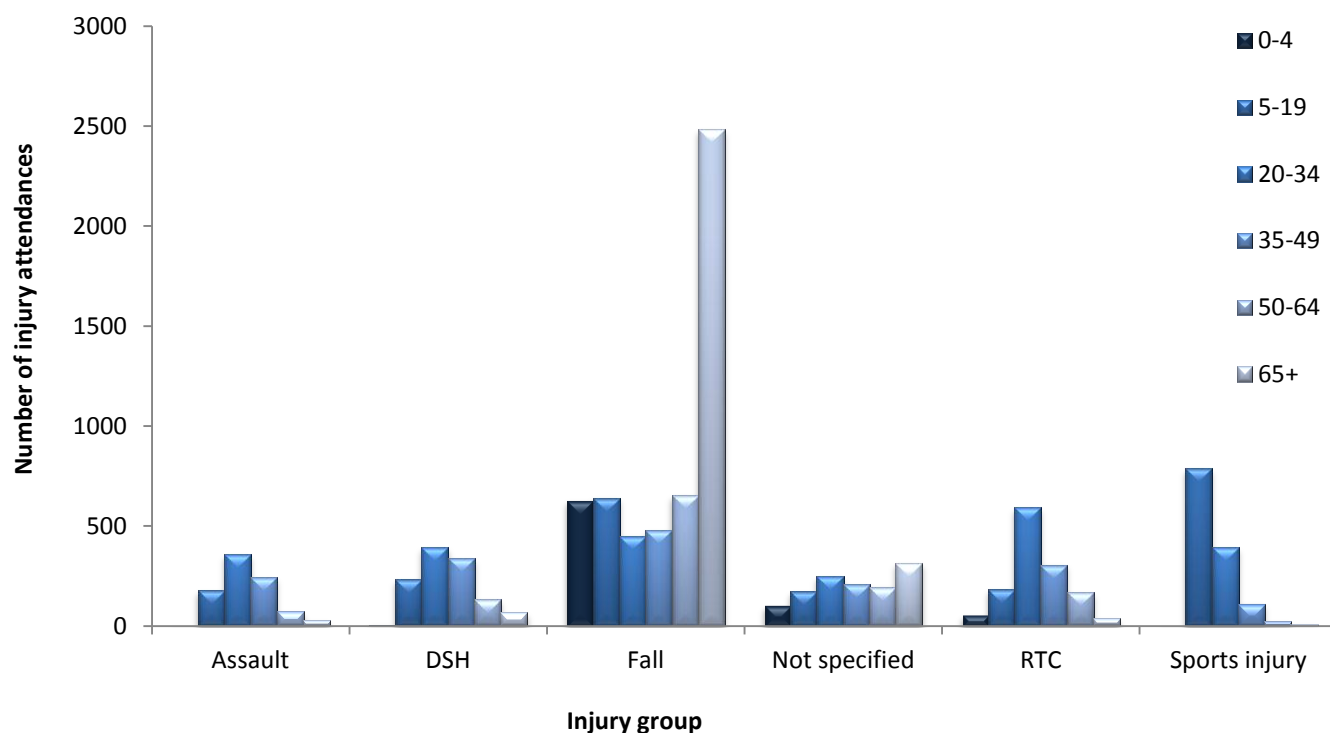
Table 1: ED injury attendances by injury group and month, April 2014 to March 2015[^]

Injury group	Apr	May	Jun	Jul	Aug	Sep	Oct	Nov	Dec	Jan	Feb	Mar	Total	%
Other injury	5822	6182	6129	6603	5264	5851	5669	5652	6119	5442	5182	6192	70107	86
Fall	383	397	395	428	459	529	473	412	484	463	416	496	5335	7
RTC	109	137	100	102	97	117	112	118	121	106	93	132	1344	2
Sports injury	134	141	149	132	76	171	117	105	48	72	73	108	1326	2
Not specified	10	0	0	0	0	0	315	336	280	286	12	8	1247	2
DSH	96	101	104	90	83	74	87	85	73	120	120	144	1177	1
Assault	82	74	76	78	64	85	68	85	61	70	73	68	884	1
Total	6636	7032	6953	7433	6043	6827	6841	6793	7186	6559	5969	7148	81420	100

[^] Due to low numbers brought in dead and penetrating knife injury are included in other injury (n=90). Stab wounds (n=15) are included in assault.

Nearly half (47%) of fall attendees were aged 65 years or over, almost six in ten (59%) sports injury attendees were aged between 5 and 19 years, and over four in ten (44%) RTC attendees were aged between 20 and 34 years (figure 3).

Figure 3: ED injury attendances by age group and injury group (excluding other injury), April 2014 to March 2015[†]



[†] There were seven records where the age was unknown; these have been omitted from the chart.

Table 2 shows the ethnicity of injury attendees to Tameside General Hospital ED. The majority (63%) were White; almost a third (29%) did not have a recorded ethnicity.

Table 2: ED injury attendances by ethnicity and month, April 2014 to March 2015^{1,2,3}

Ethnicity	Apr	May	Jun	Jul	Aug	Sep	Oct	Nov	Dec	Jan	Feb	Mar	Total	%
White	0	5038	4918	5123	4411	4622	4548	4514	4667	4378	3946	4826	50991	63
Not known	6636	1199	1231	1471	994	1656	1730	1668	1882	1655	1515	1769	23406	29
Not stated	0	407	394	452	330	209	190	217	207	186	166	170	2928	4
Pakistani	0	112	129	100	88	105	103	116	147	106	92	118	1216	1
Bangladesh	0	67	65	70	68	61	67	73	88	65	87	74	785	1
Indian	0	64	46	51	30	41	39	51	59	44	45	47	517	1
Mixed	0	44	52	44	28	43	51	46	38	27	43	46	462	1
Any other group	0	64	54	59	60	56	70	63	51	59	44	63	643	1
Black	0	20	41	43	<25	18	31	28	24	<30	24	28	306	0
Chinese	0	***	5	9	***	7	***	7	12	***	***	***	61	0
Asian other	0	<15	18	11	10	9	<10	10	11	9	***	***	105	0
Total	6636	7032	6953	7433	6043	6827	6841	6793	7186	6559	5969	7148	81420	100

¹ Please note that for all tables, all numbers less than five have been suppressed (***) in line with patient confidentiality. If there is only one number less than five in a category then two numbers will be suppressed to prevent back calculation from totals.

² White = Irish, British, other White background; Mixed = White and Black, White and Asian, Mixed - any other; Black = African, Caribbean, other Black.

³ Ethnicity was not recorded for any attendees during April 2014 which substantially affected the yearly totals.

Table 3 shows the incident location of injury attendances. Seven in ten (70%) occurred in the home while 8% occurred in a public place.

Table 3: ED injury attendances by incident location and month, April 2014 to March 2015

Incident location	Apr	May	Jun	Jul	Aug	Sep	Oct	Nov	Dec	Jan	Feb	Mar	Total	%
Home	4543	4839	4573	5179	4136	4521	4371	4506	5230	4799	4429	5473	56599	70
Other	978	1135	1309	1197	1143	1209	1484	1404	1271	1113	838	801	13882	17
Public place	724	633	690	660	550	637	596	559	431	377	386	462	6705	8
Work	255	249	195	225	202	261	236	177	162	162	176	208	2508	3
Educational establishment	136	176	186	172	12	199	154	147	92	108	140	204	1726	2
Total	6636	7032	6953	7433	6043	6827	6841	6793	7186	6559	5969	7148	81420	100

The disposal of a patient can give an indication of the severity of the injuries sustained. Close to six in ten (59%) attendees were referred for further treatment, 25% were admitted to hospital and 11% were discharged (table 4).

Table 4: ED injury attendances by disposal method and month, April 2014 to March 2015⁴

Disposal method	Apr	May	Jun	Jul	Aug	Sep	Oct	Nov	Dec	Jan	Feb	Mar	Total	%
Referral/follow-up	3890	4155	4128	4353	3454	4049	3942	4061	4287	3860	3530	4385	48094	59
Admitted	1659	1703	1660	1767	1544	1580	1819	1732	1902	1716	1574	1764	20420	25
Discharged	817	928	859	907	764	898	801	696	647	680	627	646	9270	11
Other	270	246	306	406	281	300	279	304	350	303	238	353	3636	4
Total	6636	7032	6953	7433	6043	6827	6841	6793	7186	6559	5969	7148	81420	100

Close to three in ten (28%) RTC attendees were discharged, almost three-quarters (72%) of sports injury attendees were referred for follow-up treatment and over four in ten (47%) deliberate self-harm (DSH) attendees were admitted to hospital (table 5).

Table 5: ED injury attendances by disposal method and injury group, April 2014 to March 2015^{4^}

Disposal method	Assault		Fall		RTC		DSH		Sports injury		Not specified		Other injury		Total	
	n	%	n	%	n	%	n	%	n	%	n	%	n	%	n	%
Referral/follow-up	576	65	3053	57	903	67	441	37	959	72	738	59	41425	59	48095	59
Admitted	55	6	1267	24	30	2	552	47	25	2	338	27	18153	26	20420	25
Discharged	147	17	884	17	371	28	26	2	326	25	140	11	7374	11	9268	11
Other	106	12	131	2	40	3	158	13	16	1	31	2	3155	5	3637	4
Total	884	100	5335	100	1344	100	1177	100	1326	100	1247	100	70107	100	81420	100

[^] Due to low numbers brought in dead and penetrating knife injury are included in other injury (n=90). Stab wounds (n=15) were included in assault.

⁴ Admitted = admitted to ED bed/became a lodged patient of the same health care provider; Discharged = discharged - did not require any follow-up treatment; Referral/follow-up = discharged - follow-up treatment to be provided by GP, referred to ED clinic, referred to fracture clinic, referred to other out-patient clinic, transferred to other health care provider, referred to other health care professional; Other = died in department, left department before being treated, left department having refused treatment, other.

Table 6 shows the arrival method of attendances to Tameside General Hospital ED; over three in ten (31%) arrived by ambulance.

Table 6: ED injury attendances by mode of arrival and month, April 2014 to March 2015

Arrival mode	Apr	May	Jun	Jul	Aug	Sep	Oct	Nov	Dec	Jan	Feb	Mar	Total	%
Other	4617	4893	4843	5290	4170	4840	4755	4717	4795	4318	4035	4938	56211	69
Ambulance	2019	2139	2110	2143	1873	1987	2086	2076	2391	2241	1934	2210	25209	31
Total	6636	7032	6953	7433	6043	6827	6841	6793	7186	6559	5969	7148	81420	100

ASSAULT ATTENDANCES

Between April 2014 and March 2015 there were 868 assault-related injury attendances to Tameside General Hospital ED. Over six in ten (64%) were male and 40% were aged between 20 and 34 years. Over four in ten (41%) arrived at the ED by ambulance (table 7).

Table 7: ED assault attendances by gender, arrival mode and age group, April 2014 to March 2015

	Assault attendances (n=884)		All injury attendances (n=81,420)	
	n	%	n	%
Gender				
Female	320	36		51
Male	564	64		49
Arrival mode				
Other	518	59		69
Ambulance	366	41		31
Age group				
0 - 4	5	1		9
5 - 19	178	20		16
20 - 34	357	40		22
35 - 49	242	27		17
50 - 64	73	8		14
65 plus	29	3		22